

DISTRIBUTION

OVERVIEW

The distribution network consists of heavy-duty stainless steel tubing and/or hydraulic hose. At the end of the distribution network, the dry chemical is disbursed into the protected areas through cone spray nozzles, which permit the broad distribution of the powder that is necessary for a “total flooding” system. Spring loaded, hinged caps at the nozzle openings prevent the infiltration of foreign materials that could possibly clog the nozzle and prevent or diminish the system discharge.

Liquid agent nozzles are directed onto the target surface. Rubber nozzle caps prevent the infiltration of foreign materials that could possibly clog the nozzle and prevent or diminish the system discharge.

Our dual agent system combines the best aspects of both systems to give the best coverage possible.

KEY FEATURES

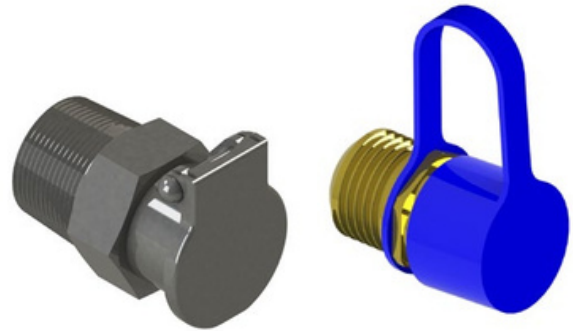
- Purpose built for heavy equipment
- Dry chemical extinguishes fires through local application and total flooding
- Liquid agent rapidly cools superheated temperatures via local application
- Third-party tested and approved by FM HDME, ActivFire AS 5062, and CE



SYSTEM COMPONENTS

NOZZLES - A551000 DRY CHEMICAL NOZZLE, A551700 LIQUID AGENT NOZZLE

Nozzles disperse the fire suppression agent(s) into the protected area of the machine. The dry chemical nozzle (A551000) is covered by a fixed, spring-loaded nozzle cap and the liquid agent nozzle (A551700) is covered by a plastic nozzle blow off cap (A551720) in order to keep the opening clean and free of debris that could cause clogging. The nozzles deliver a conical discharge pattern for broad distribution of the agent(s). The nozzles are finished with a 1/2" male NPT thread.



A551000

A551700

DRY CHEMICAL AGENT TANKS

Each assembly consists of the dry chemical agent, agent tank, gas tube, cap, and bursting disc. The agent tank is non-pressurized, with the introduction of nitrogen gas for pressurization only at the time of actuation.

- A200720 - 20 lb tank
- A200505 - 30 lb tank
- A202000 - 60 lb tank
- A200507 - 125 lb tank



A200720 - 20 lb



A200505 - 30 lb



A202000 - 60 lb



A200507 - 125 lb

LIQUID AGENT TANKS

Each assembly consists of the liquid agent, agent tank, gas tube, check valve package, cap, pressure relief valve, and bursting disc. The agent tank is non-pressurized, with the introduction of nitrogen gas for pressurization only at the time of actuation. The liquid agent is provided in 5 gallon (18.93 L) shipping containers and must be added to the tank after installation.

- A201000 - 5 gal tank
- A200511 - 15 gal tank
- A200513 - 30 gal tank



A201000 - 5 gal



A200511 - 15 gal



A200513 - 30 gal

BURSTING DISCS - A200567 3/4" DISC, A200568 1.5" DISC

The bursting discs are a consumable item and must be replaced after each discharge. An arrow is inscribed on the bursting disc to indicate the direction of flow.



A200567



A200568

AGENT TANK MOUNTING BRACKETS

Depending on the system configuration and mounting requirements, the following brackets are used to mount the agent tanks. Vertical brackets are used for mounting to vertical surfaces (ex. walls) and horizontal brackets are used for mounting to horizontal surfaces (ex. floors).

- A200509 - 125 lb or 15 gal base ring
- A200510 - 30 gal base ring
- A210010 - 20 or 30 lb vertical mount
- A211010 - 20 or 30 lb horizontal mount
- A213010 - 60 lb or 5 gal horizontal mount
- A213510 - 60 lb or 5 gal vertical mount



A200509



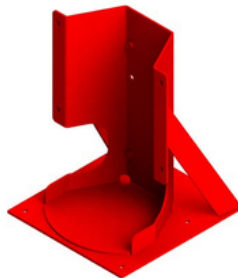
A200510



A210010



A211010



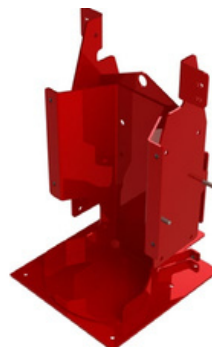
A213010



A213510

In addition to the standard brackets, two compact options are available for horizontal mount applications. A213700 allows for mounting one 20 lb or 30 lb agent tank, one 60 lb or 5 gal liquid agent tank, and the relevant nitrogen cartridges. A213800 allows for mounting two 60 lb agent tanks or two 5 gal liquid agent tanks (or a combination), and the relevant nitrogen cartridges.

- A213700 - Compact dual bracket
- A213800 - Compact dual bracket 60/60 - 60/5



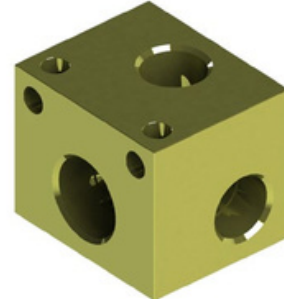
A213700



A213800

TEES

Tees are used as a manifold for the distribution network. Tees must be installed so that the distribution line experiences a 90° change in flow direction relative to the supply line.



STAINLESS STEEL TUBING

Stainless steel tubing is used for the distribution of the fire suppression agent(s). The tubing is typically used between the supply tee and the distribution tees, as well as between the distribution tees and the nozzles.



DISTRIBUTION HOSE AND FITTINGS

Approved flexible hydraulic hoses may be used in the distribution network for the equivalent stainless steel tubing. Female hose fittings must be used with the corresponding adapters.



SPECIFICATION CHARTS

NOZZLES

COMPONENTS & PART NO.	DIMENSIONS	SPRAY PATTERN	SHIPPING WEIGHT
A551000 Dry Chemical Nozzle	1" x 1.5" (25 x 38 mm)	30° cone, up to 3' (91 cm), dia. at 6' (183 cm) distance	0.0499 kg (0.11 lb)
A551700 Liquid Agent Nozzle	1" x 1.25" (25 x 32 mm)	60° cone, up to 18" (46 cm), dia. at 20" (51 cm) distance	0.0839 kg (0.185 lb)

DRY CHEMICAL TANKS

COMPONENTS & PART NO.	DIMENSIONS	NOMINAL CAPACITY	MAX NOZZLES	SHIPPING WEIGHT
A200720 20 lb Tank	7" x 15.5" (18 x 37 cm)	20 lb (9.1 kg)	4	15.8757 kg (35 lb)
A200505 30 lb Tank	7" x 21.5" (18 x 55 cm)	30 lb (13.6 kg)	6	22.6796 kg (50 lb)
A202000 60 lb Tank	9" x 26.75" (23 x 68 cm)	60 lb (27.2 kg)	12	37.1946 kg (82 lb)
A200507 125 lb Tank	14.75" x 29.5" (38 x 75 cm)	125 lb (56.8 kg)	24	106.5942 kg (235 lb)

LIQUID AGENT TANKS

COMPONENTS & PART NO.	DIMENSIONS	NOMINAL CAPACITY	MAX NOZZLES	SHIPPING WEIGHT
A201000 5 gal Tank	9" x 26.75" (23 x 68 cm)	5 gal (18.93 L)	4	34.7 kg (76.5 lb)
A200511 15 gal Tank	14.75" x 29.5" (38 x 75 cm)	15 gal (56.78 L)	9	93.894 kg (207 lb)
A200513 30 gal Tank	20" x 33.75" (51 x 86 cm)	30 gal (113.56 L)	18	177.355 kg (391 lb)

BURSTING DISCS

COMPONENTS & PART NO.	DIMENSIONS	USED ON	INLET	OUTLET	SHIPPING WEIGHT
A200567 3/4" (19 mm) Bursting Disc	1.5" x 2.5" (38 x 64 mm)	A200505, A200511, A200513, A200720, A201000, A202000	3/4" male NPT	3/4" female NPT	0.2812 kg (0.62 lb)
A200568 1.5" (38 mm) Bursting Disc	2" x 5" (51 x 127 mm)	A200507	1.5" male NPT	1.5" male NPT	0.9662 kg (2.13 lb)

AGENT TANKS MOUNTING BRACKETS

COMPONENTS & PART NO.	DIMENSIONS	SHIPPING WEIGHT
A200509 125 lb or 15 gal Base Ring	19.75" diameter (50 cm)	10.886 kg (24 lb)
A200510 30 gal Base Ring	26" diameter (66 cm)	17.69 kg (39 lb)
A210010 20 or 30 lb Vertical Mount	9.25" x 7" x 12.25" (24 x 18 x 31 cm)	4.0823 kg (9 lb)
A211010 20 or 30 lb Horizontal Mount	10" x 10.5" x 12.5" (25 x 27 x 32 cm)	7.8993 kg (17.41 lb)
A213010 60 lb or 5 gal Horizontal Mount	13" x 13.75" x 19.5" (33 x 35 x 50 cm)	14.9685kg (33 lb)
A213510 60 lb or 5 gal Vertical Mount	13" x 9.5" x 19" (33 x 24 x 48 cm)	6.7246 kg (14.82 lb)
A213700 Compact Dual Bracket	16.75" x 13" x 22.75" (41 x 33 x 58 cm)	21.7727 kg (48 lb)
A213800 Compact Dual Bracket - 60/60 - 60/5	19.5" x 13" x 23" (50 x 33 x 58 cm)	25 kg (55.11 lb)

TEES

COMPONENTS & PART NO.	DIMENSIONS	INLET	OUTLET	SHIPPING WEIGHT
A523000	2.5" x 2" x 2" (6 x 5 x 5 cm)	3/4" NPT	3 x 1/2" NPT	0.3039 kg (0.67 lb)
A523007	2.5" x 2" x 2" (6 x 5 x 5 cm)	3/4" NPT	3 x 3/4" NPT	0.2654 kg (0.585 lb)
A523009	4" x 3" x 4" (10 x 8 x 10 cm)	1.5" NPT	4 x 3/4" NPT	1.6375 kg (3.61 lb)
A523010	2.5" x 2" x 2.5" (6 x 5 x 6 cm)	3/4" NPT	4 x 1/2" NPT	0.3946 kg (0.87lb)

STAINLESS STEEL TUBING

COMPONENTS & PART NO.	DESCRIPTIONS	SHIPPING WEIGHT
A401000	1/2" (12.7 mm) OD tubing x 0.035" (0.89 mm) wall	0.0785 kg (0.173 lb)
A402000	3/4" (19.1 mm) OD tubing x 0.049" (1.24 mm) wall	0.1573 kg (0.347 lb)
A511000	3/4" tube x 3/4" male NPT fitting	0.195 kg (0.43 lb)
A511500	1/2" tube x 1/2" male NPT fitting	0.1066 kg (0.235 lb)
A512000	1/2" tube x 1/2" female NPT fitting	0.152 kg (0.335 lb)
A513000	1/2" tube x 1/2" male NPT x 90 fitting	0.1542 kg (0.34 lb)

DISTRIBUTION HOSE AND FITTINGS

COMPONENTS & PART NO.	DESCRIPTIONS	SHIPPING WEIGHT
A602000P	1/2" distribution hose	0.1089 kg (0.24 lb)
A602200P	1/2" hose x 1/2" male NPT fitting	0.0816 kg (0.18 lb)
A602400P	1/2" hose x 1/2" female JIC fitting	0.161 kg (0.355 lb)
A602600P	1/2" hose x 1/2" male JIC adapter	0.0794 kg (0.175 lb)
A603000P	3/4" distribution hose	0.2177 kg (0.48 lb)
A603200P	3/4" hose x 3/4" male NPT fitting	0.2948 kg (0.65 lb)
A603400P	3/4" hose x 3/4" female JIC fitting	0.1814 kg (0.4 lb)
A603600P	3/4" hose x 3/4" male JIC adapter	0.1383 kg (0.305 lb)
A609000	1.5" distribution hose	0.2586 kg (0.57 lb)
A609200	1.5" hose x 1.5" male NPT fitting	0.601 kg (1.325 lb)
A609400	1.5" hose x 1.5" female JIC fitting	0.7212 kg (1.59 lb)
A609600	1.5" hose x 1.5" male JIC adapter	0.474 kg (1.045 lb)

APPROVALS & CERTIFICATIONS

AFEX fire suppression systems have been tested and certified by:

- Factory Mutual - FM HDME (Heavy Duty Mobile Equipment)
- Australian Standards - AS 5062 (Fire protection for mobile and transportable equipment)
- European CE standard

ADVANTAGES OF CHOOSING AFEX

- Commitment to top-notch, personable customer service - when you call, you speak to a real person who cares!
- Forward-thinking, innovative company that keeps current with heavy equipment trends
- Timely and professional shipment of orders
- Employment of American workers in an American manufacturing plant
- ISO 9001 certifies standardization and quality assurance

ORDERING INFORMATION



We appreciate our customers and are committed to providing the industry's best service and support. That's part of what makes us the number one manufacturer of vehicle fire suppression systems.

Order all system components through your local distributors.

Corporate Office:

6031 Oak Forest Drive
Raleigh, NC 27616
United States of America

919.781.6610
info@afexsystems.com



WE KNOW HEAVY EQUIPMENT

www.afexsystems.com