

F198726 – EP0-Parts box (Level 1)

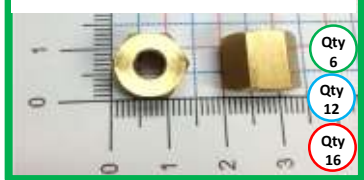
F198727 –EP0-Part box (level 2)

F198728 – EP0-Part box (level 3)

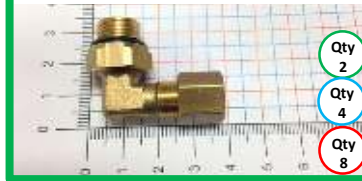
F000543 - 1/4-28UNF x G1/8 cube



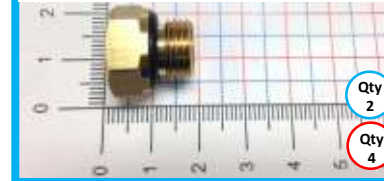
F000584 - 3/16 secondary nut



F104440 - 5/16 x G1/4



F104837 - mainline plug



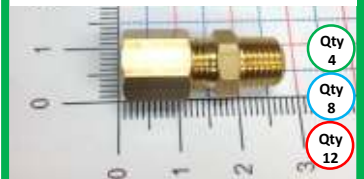
F118246 -3/16 secondary single line



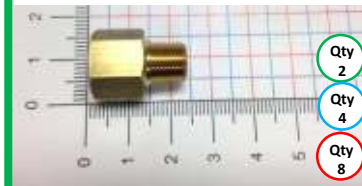
F000542 - R1/8 x G1/8 cube



F000604 - 3/16 x R1/8



F000541 - R1/8 x G1/8 adapter



F102457 - M6x1 x M8x1



F118247 -3/16 secondary double line



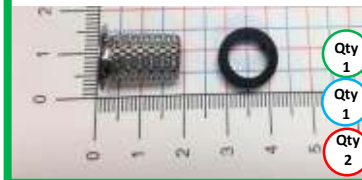
F100726 -1/4 -28UNF G1/8 cube



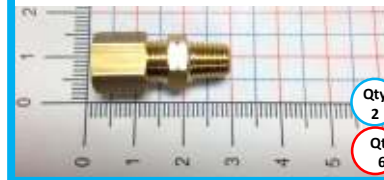
F101410 - 3/16 x R1/8



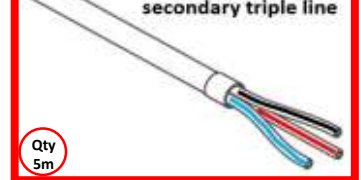
F103005 - pump fill filter kit



F000436 - 3/16 x M8x1



F118248 -3/16 secondary triple line



F000580 - 5/16 mainline ferrule



F000222 - 3/16 union



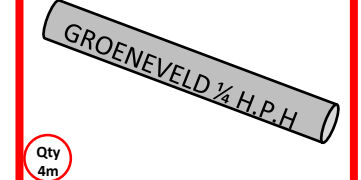
F177969 -1/4 hose 8mm reusable



F104544 - pressure gauge



F113422 - 1/4 mainline



F000579 - 5/16 mainline nut



F000223 - 5/16 union



F102455 - 3/16 x M6x1



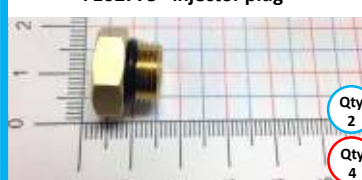
F000585 - 3/16 secondary ferrule



F104441 - 5/16 x G1/4



F102775 - injector plug



Preventative maintenance

1. Check for grease level in reservoir, minimum 1/3 full.
2. Perform a visual inspection of each grease point on the unit to determine if points are receiving correct amounts of grease.
3. Inspect the entire system for worn lines, leaks, secure mounting of components, pump and correct tying and routing of lines.
4. Fill the reservoir until the follower plate just passes the vent hole in the guide rod, take care not to trap air below the follower plate.

NEVER OVERFILL RESERVOIR.

For technical assistance and other available resources please contact

Milton, ON 800-263-1760

www.groeneveld-group.com

Brunswick, OH 800-586-7283

www.groeneveldusa.com

MFP
AUTOMATION
ENGINEERING



SCAN MFP

