



**MFP**  
AUTOMATION  
ENGINEERING

**AFEX**  
FIRE SUPPRESSION SYSTEMS

**WE KNOW HEAVY EQUIPMENT**



 SCAN ME



# ABOUT US

## HEAVY EQUIPMENT PEOPLE SPECIALIZING IN FIRE PROTECTION



**AFEX is uniquely positioned to meet your fire protection needs.** We have dedicated 50 years to the discovery, innovation, manufacture, and testing of vehicle fire protection systems designed **exclusively** for mobile heavy equipment. Our engineering personnel have heavy equipment backgrounds and we have chosen to be specialists in protecting heavy equipment. **It's all we do.**

Our company is dedicated to helping you protect your investment from fire loss. We recognize that any machine downtime results in lost productivity and earnings. That's why **we design low maintenance, reliable systems that protect personnel and productivity** but do not deter machine operation. Our systems can be **easily serviced**

**and recharged in the field**, decreasing downtime while protecting your valuable capital investment. They also have the **lowest cost of ownership** of any vehicle fire suppression system.

For these reasons and more, **AFEX is the #1 manufacturer of off-road fire suppression systems in the Americas.**

**AFEX is a company of heavy equipment people specializing in fire protection, that designs and builds reliable systems that protect your heavy equipment from loss and downtime.** The systems are customized to meet your specific equipment and environmental requirements.

A man with a beard and safety glasses is looking intently at a large red fire suppression system in a factory setting. The system consists of several red cylindrical tanks connected by hoses and pipes. The background shows industrial equipment and a yellow sign with the text "D&SHAZ".

# CAPABILITIES

---

We provide reliable fire suppression solutions that keep your equipment productive, safe, and profitable. We'll work hand in hand with you to develop a solution that's right for you.

**RISK ASSESSMENT**

**DESIGN**

**TRAINING**

**INSTALLATION**

**AUDITING**

**CORPORATE PROGRAMS**

**OEM ACCOUNTS**

**ON SITE TECHNICAL SUPPORT**



# PORTFOLIO

---

AFEX knows the mining industry and the demands of your operation. Our fire suppression systems are **purpose built** to withstand everyday abuse - above or below ground. No other fire suppression system manufacturer beats AFEX reliability or support.

## OVER 70% OF OUR BUSINESS IS MINING

**Safety never takes a break.** That's why companies like Barrick, Newmont, Vale, Grupo Mexico, and more choose AFEX to maximize their safety and productivity with **proven solutions.**

SOSSEGO MARLIN LACARIDAD  
COBRE PANAMA ONGAPUMA ELABRA CHIMBEROS ROSEBUD PICO  
SANCRISTÓBAL PASCUA-LAMA PENASQUITO BINGHAMCANYON SANTABARBARA  
FALCONDO MMX PARÁSTATE REDHILLS  
MINERALOMADENIQUEL  
WHARF BUENAVISTA DEL COBRE RADOMIRO TOMIC TINTAYA  
SPENCE  
ROSEBEL MIAMI PIERINA  
DOLORÉS PARACATU CORTÉZ  
U.S. STEEL COLLAHUASI WALNUTCREEK LOSPELAMBRES LAS BAMBAS  
VELADERO SANMIGUEL PUEBLO VIEJO  
SIERRITA LOSFILOS MORENCI ABSALOKA TYRONE  
USG  
ANTAMINA SILVERBELL  
ESCONDIDA SABINE ALEGRIA  
CAMINO REAL CHUQUICAMATA  
DOLETHILLS CADDOCREEK  
CERRO COLORADO RAY LAGUNA NORTE  
LIBERTY FIVE FORKS  
GOLD STRIKE

# SOLUTIONS

---

## THERE'S NO "ONE SIZE FITS ALL" FIRE SUPPRESSION SYSTEM

As part of the AFEX program approach, we analyze the unique fire risks of every machine, the safety concerns of your operators, and the potential financial impact of a fire to provide a protection program that's right for you.

### Fire Risk Assessments



**Ignition Sources** | Turbochargers, hydraulics, electric cables

**Fuel Sources** | Diesel, hydraulic, debris, hazardous material

**Personnel Safety** | Operator location, exposure risk, egress, environmental hazards

**Economic Risk** | Vehicle cost, loss production, natural resource

### Fire Protection Programs

#### 1. Risk Reduction

Vehicle design changes or maintenance to reduce fire risk

#### 2. Operator Training

Policies and procedures to increase safety and improve fire response

#### 3. Fire Suppression Systems

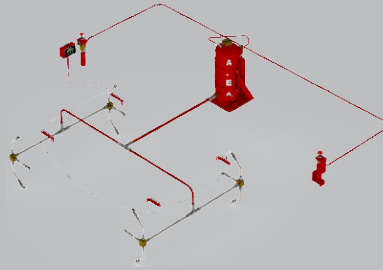
Third-party certified systems to fit your machine

#### 4. Supplemental Protection

UL listed and MSHA 30 CFR § 75.1909 compliant side cartridge A:B:C dry chemical extinguishers

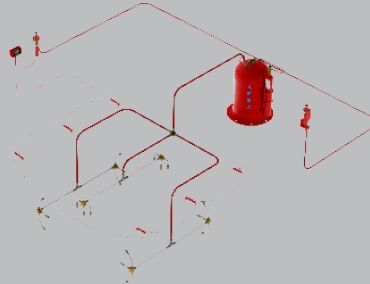
## Dry Chemical System

Pound for pound, provides the **fastest fire knockdown** and **greatest total coverage**. Delivers **three-dimensional protection** against common threats including Class A (debris), Class B (fuel), and Class C (electrical) fires, making it the most versatile agent for heavy equipment.



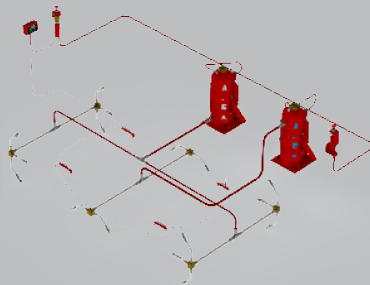
## Liquid Chemical System

Targets hot surfaces and separates hydrocarbon molecules to suppress Class A (debris) and Class B (fuel) fires. Provides **exceptional cooling and protection against fire reignition**.



## Dual Agent System

**Maximizes your protection by applying both dry and liquid agent to specific hazard areas.** Dry chemical provides fast knockdown and coverage, liquid agent targets hot surfaces for suppression and cooling. NFPA 122 requires dual agent for hydraulic shovels!



# TECHNOLOGY

---

## MOST ADVANCED MONITOR PANEL ON THE MARKET

Durable, powerful, and easy to use. With just one Control Unit, that uses just one harness, you can upgrade your AFEX fire suppression system to the next level of performance.

### Featuring:

- Programmable LCD display
- Multiple languages
- Internal event log
- One year standalone power
- Dual detection capability
- Dual actuation circuits
- ISO 13766 compliant







## Autonomous Vehicles

The transition to unmanned vehicles brings about new requirements for your fire suppression systems.

Driverless vehicles eliminate the opportunity for an in-cab operator to identify a fire and manually actuate a fire suppression system.

Fortunately, **AFEX fire suppression systems offer advanced remote system monitoring and automatic fire response.**

## Fleet Management

When do you want to know you have a fire on your equipment?

AFEX was the first to anticipate and address this need. We developed our fire suppression systems to interface with your equipment to provide **real time status of your AFEX fire suppression systems via your on board dispatch system.**

## Remote Operations

Whether you are operating a remote control tree chipper or underground scoop tram, an AFEX fire suppression system puts you in control, **remotely.**

If a fire is detected, the AFEX system will alert your operators and first responders. The operator can even **manually actuate and discharge the AFEX fire suppression system from their remote location.**

# GLOBALLY CERTIFIED

---

Product certifications are more than just logos on our products. These international third-party approvals and certifications are **critical** to ensuring that a vehicle fire suppression system is properly designed to protect off-road equipment and endure the rigors of day to day operation in the field.

AFEX fire suppression systems are rigorously tested to meet extreme conditions and pass specific fire tests designed to simulate real work risks of off-road equipment.

**Not all “approvals” are the same.** Your fire suppression system should meet standards that apply to off-road equipment, such as UL 1254, AS 5062, and FM HDME. Insurance companies will require your systems to have met these standards’ testing criteria and that they bear the related FM or ActivFire symbols in order to provide coverage for fire related incidents.

**AFEX is committed to an ongoing testing program to attain and maintain the latest industry standards for vehicle fire protection.**





## **MADE IN THE USA, FOUND ON ALL 7 CONTINENTS**

**Our international network of distributors provide products and services globally from the mines of Nevada, to the forests of Russia, to the steel mills of Germany, and for the exploration of Antarctica.**



# AFEX

FIRE SUPPRESSION SYSTEMS

WE KNOW HEAVY EQUIPMENT



 SCAN ME

6031 Oak Forest Drive  
Raleigh, NC 27616  
(919) 781-6610  
[www.afexsystems.com](http://www.afexsystems.com)